

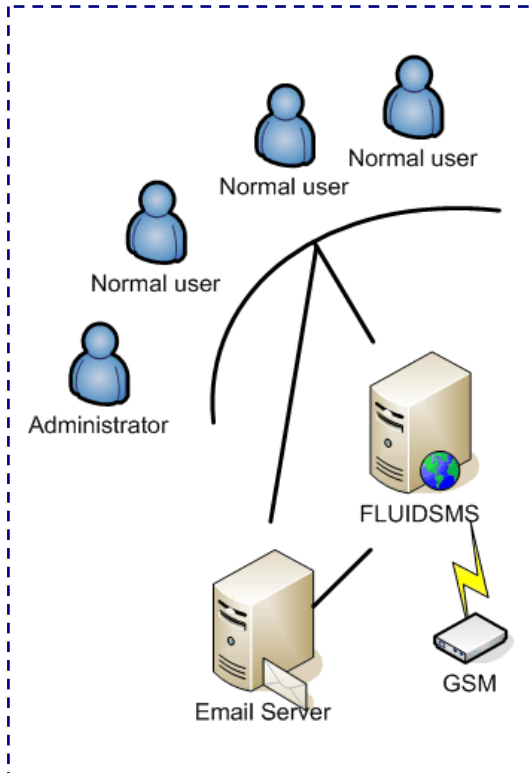


Fluid SMS Gateway

Gateway for your SMS Needs

Runs in Windows 2000, 2003, 2008, XP, Vista, Windows 7

Fluid SMS Gateway is a TWO way email to SMS gateway. It allows users to send and receive SMS in the same way they send and receive email. It can also integrate easily to any third party applications via SMTP protocol. Administrators can also grant access to normal users via the web interface. This allows normal users to view the SMS that they've sent and received from any web browser.



Key Features and Benefits

Easy monitoring of outgoing/incoming transmissions

Administrators and normal users can monitor centralized SMS transmission logs from a web browser or notification via email. This greatly increases the ease of monitoring both outgoing and incoming SMS transmissions.

Same Sending Interface as Email

Fluid SMS Gateway allows users to send SMS like they send email. It can work with any mail system that allows receptive sending via SMTP.

Advanced Filtering

Users can perform filtering on the SMS transmission logs based on a number of parameters such as date, sender, recipient etc. This increases the efficiency of users when they need to search for certain SMS transmissions.

Access Control

Administrators can grant access to normal users just by adding them into the licensed users list. The normal users can then view the SMS that they've sent and received.

Supports MS Access and MS SQL database for Logs

Fluid SMS Gateway can switch database between MS Access and MS SQL with ease.

Flexible Transmission profiles for each user

Each system user can have own predefined transmission profile. It allows full customization of message down to individual users.

Automated Server formatting of Text Message Attributes

Fluid SMS Gateway can apply formatting to the body text message, subject text message as well as recipients' number. For example, message signatures can now be configured in body text message.

Auto Delete Log Mechanism

Message Logs can be configured to be auto deleted after certain period in the system.

System Requirements

INSTALLATION REQUIREMENTS

- Any computer with Windows 2000/XP/2003/Vista
- 256MB RAM and 800MHz processor
- Microsoft Dotnet 2.0 framework

NETWORK PORTS REQUIREMENTS

- In built SMTP Port
- In built POP3 Port

MODEM REQUIREMENTS

- Supported GSM Modem* with sim chip

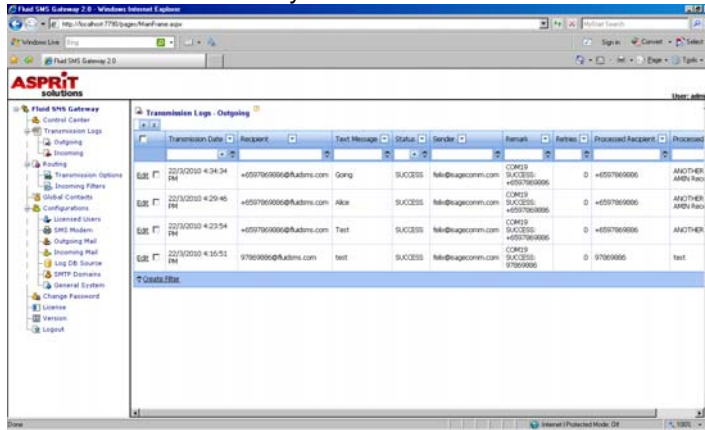
* Please refer to manual for supported GSM modem

LICENSING

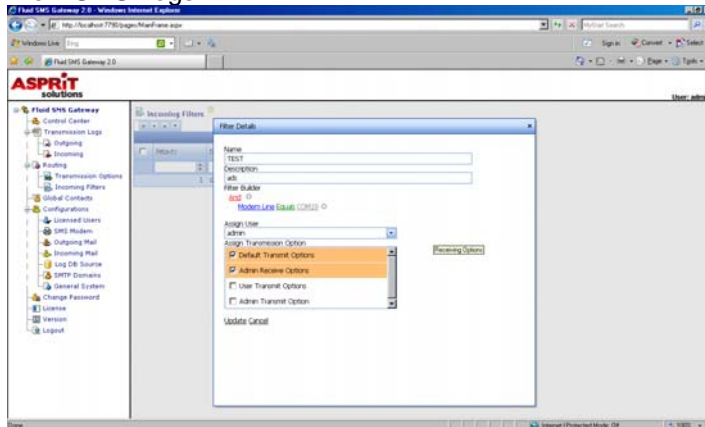
Number of Users and Number of Lines



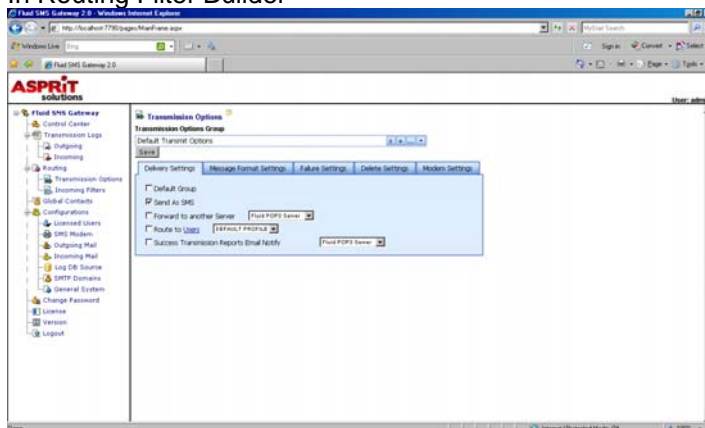
Dashboard Monitor of System Health



View SMS Logs



In Routing Filter Builder



Transmission Options

Global contacts and contact groups

Fluid SMS Gateway supports the creation of global contacts. The contacts can be further organized into contact groups. Users can then select the respective contacts or contact groups to send SMS. They can assign a group name to

Better control on transmission failure contingency

Fluid SMS Gateway has an option to route failure transmission to another SMS gateway or SMTP server. This is useful in the case of modem failure or loss of signal where it can route message to another operational server. Users can also receive failure notification reports.

Supports SMS from ERP / external systems via emails or external POP3 Account

ERP / external systems can send emails to Fluid SMS Gateway which in turn will send these emails out as SMS. Alternatively, ERP / external systems can deposit the message in an external POP3 account. Fluid SMS Gateway can then poll these POP3 messages and send them out as SMS.

Built-in SMTP server

Fluid SMS Gateway does not require the additional installation of Windows IIS SMTP component. It has its own built-in SMTP server to receive email messages for sending out SMS. As such, Fluid SMS Gateway can be installed in Windows Vista or Windows 7.

Intelligent Incoming Message Routing

Fluid SMS Gateway has a comprehensive Incoming filter builder that allows highly intelligent customization of incoming SMS routing. Criteria include incoming number, modem line, message, date and time. Each incoming SMS will be subjected to each filter based on priority. The highest priority will be processed first. Once the filter criteria are met, it will be assigned with corresponding designated Transmission Options actions.

Multiple Domains Accepted

Fluid SMS Gateway allows customization of domain name such that unique domain name of organization can be used instead.

Download your evaluation copy from <http://www.asprit.com/fluidmsgatewaydownload.shtm>

ASPRIT SOLUTIONS PTE LTD
 1003, Bukit Merah Central, #06-41, Singapore 159836
 Tel: (65) 62707941
 Fax: (65) 62707205
 Email: sales@asprit.com